

PVC-COATED SEALING LOCKNUT

The primary function of a PVC-coated conduit system is to maximize the life of the electrical system contained and to prevent corrosion from sabotaging its structural integrity. One of the most common exposures occurs at the threads of conduit connections when a sleeve at the female thread is unavailable. Most electrical fitting types can be coated, but in the instance the product is unable to be coated, protection of the thread is still important to the performance of the system.

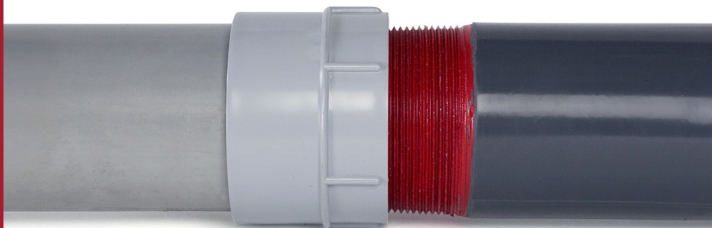
To prevent thread exposure, Plasti-Bond developed a simple, detachable sleeve providing a consistent seal over the exposed conduit threads at points of connection.



Plasti-Bond can contribute to extended service life by more than ten times that of other product options. By eliminating chances of product failure, we also eliminate the staggering cost of downtime, safety hazards, replacement costs, and related liabilities.

A major part of corrosion prevention is proper product selection based on understanding the precise requirements of any given job and matching them with the best available anti-corrosion products. Plasti-Bond PVC-coated conduit and fittings provide a superior sealed system designed to last in the harshest environments and protect electrical infrastructure from corrosion.

EXPOSED

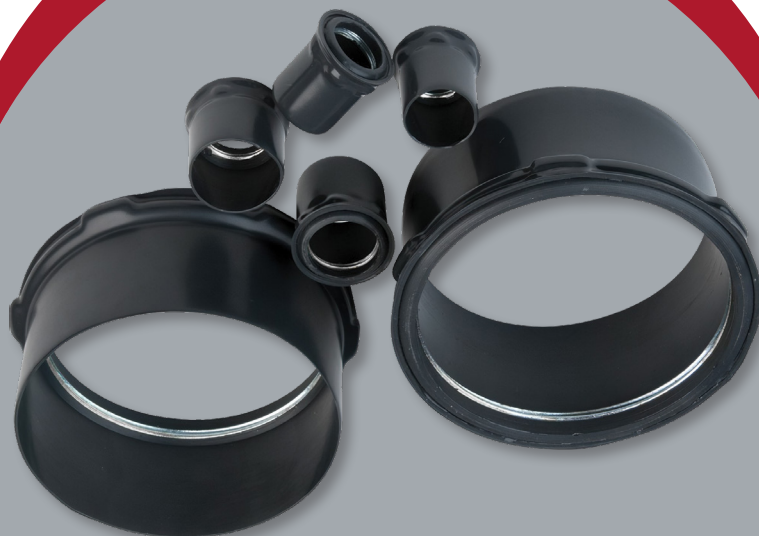


SEALED



Plasti-Bond's Patented Sealing Locknut features:

- Built-in gasket at the face of the locknut to provide a positive seal against water, oils, and other liquids against the hub of a connected fitting.
- An integral sleeve on the reverse side of the locknut that is designed to fit securely over the circumference of the adjacent coated conduit.
- Extra-thin construction which allows the sleeve to thread on only 2-1/2 threads, leaving at least seven threads for complete engagement of the conduit to its connected fitting.
- Gasket and sleeves made of specially-formulated and UL-recognized PVC materials, tested for aging-resistant compressive and tensile properties.
- A simple design that offers easy installation and tightening over conduit threads at joints throughout the system.



PVC-COATED SEALING LOCKNUT

A ROBROY Brand

Plasti-Bond®

Plasti-Bond®

A ROBROY Brand

1100 US Highway 271 S,
Gilmer, TX 75644

(903) 843-5591
csr@robroy.com

**To learn more about the patented
Sealing Locknut and other Plasti-Bond
innovations, scan the code with your
mobile device.**

